



©NICI

Instructions regarding safety and functions

Please read these instructions thoroughly and keep them for future reference. In order to avoid unwanted surprises when playing, we recommend going through the instructions together with your child and to explain the functions to them.

Caution!

Remove all packaging before giving to a child.

Inserting and replacing the batteries

The batteries which are contained in the plush toy only serve for demonstration purposes in the shop.

Please replace these batteries with new alkaline batteries before using the toy.

The toy must only be operated with three AA 1.5V batteries.

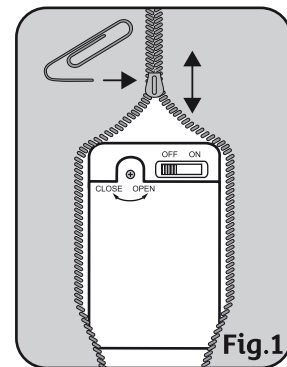


Fig.1

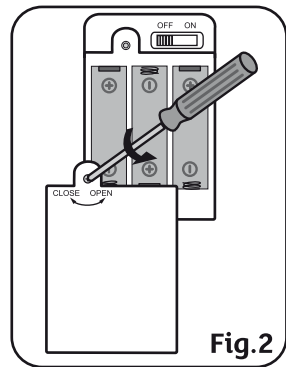
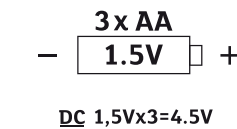


Fig.2



DC 1,5Vx3=4.5V

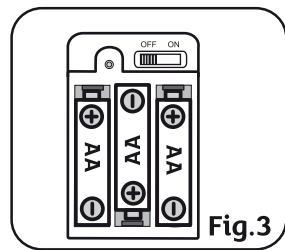


Fig.3

- 1) Open the zip on the back of the cuddly toy (Fig.1).
- 2) Open the plastic cover of the battery compartment using a screwdriver (not included) (Fig.2).
- 3) If necessary, remove old batteries and insert 3 new AA batteries in the slots. Make sure the polarity is correct (Fig.3).
- 4) Replace the cover of the battery compartment and tighten the screws using the screwdriver.

Safe and responsible handling of batteries

Batteries may only be inserted or taken out by an adult or under supervision of an adult!

Batteries are not to be heated excessively or overexposed to sunrays, fire and whatnot.

For longer periods of use, we do not recommend the use of rechargeable batteries.

If the toy is not used over a longer period of time, slide the switch to the "OFF" position in order to increase the battery life.

We also recommend removing the batteries in order to avoid leaking and damage to the product.

Different types of batteries or new and used batteries are not to be mixed.

Non-rechargeable batteries are not to be recharged.

Rechargeable batteries must be removed from the device before they are charged up.

Rechargeable batteries should be recharged under adult supervision only!

Exhausted batteries are to be removed from the device.

Supply terminals are not to be short-circuited.

Insert the batteries in the designed spaces. Observe the proper polarity.

Electrical devices/batteries must be disposed of separately to normal rubbish.

In the interests of our environment, we would like to request that you hand in empty batteries at special disposal points and recycle them.

If a battery is swallowed, seek medical attention immediately.



Washing instructions

Surface can be cleaned with a damp cloth. Keep moisture away from the battery compartment!

Operation

In order to activate the functions of your **Crazy Mic**, the switch in the battery compartment must be set to "ON" (Fig. 4).

After the activation, the **Crazy Mic** greets you with a cheerful "Hey Hey".

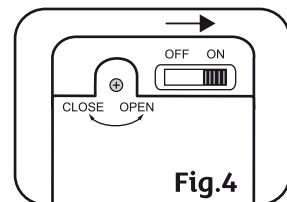


Fig.4



Talk to me, I will copy what you say!

Briefly squeeze my left hand until I greet you with a "Hey Hey". Afterwards, my nose begins to light up red and I immediately repeat everything you say to me.



I remember messages!

If you would like to record a message, squeeze my right hand (approximately 2 seconds) until a beep is heard. Now you can record a song, a poem or simply a few nice words (max. 2 minutes).

Briefly squeeze my right hand again to save the message (indicated by another beep). Squeeze it for a third time (briefly) to play the message. You can listen to the message again and again; just briefly squeeze my right hand.



Being tickled is sooo funny!

If you tickle my tummy, I laugh wholeheartedly and my mouth starts to shake. Please tickle me very often so we can laugh together.



I need my sleep!

If you hold my eyes closed for a longer period (approx. 5 sec.) or squeeze my left hand for an extended time, I become really tired. I start to snore and I fall asleep (energy-saving mode). I also become really tired if you do not play with me for a longer time (energy-saving mode after approx. 2 min.). Snuggle up to me and we will have sweet dreams together. Wake me up again by briefly squeezing my left hand.

Troubleshooting

- **Crazy MIC does not react as described:** Please check the batteries (see Fig. 1 to 3). Are the batteries drained? Are they inserted correctly? Check for correct polarity. Insert new batteries, if necessary.
- **No function anymore:** Please take the batteries out, insert them again and switch **Crazy MIC** to "ON" again.